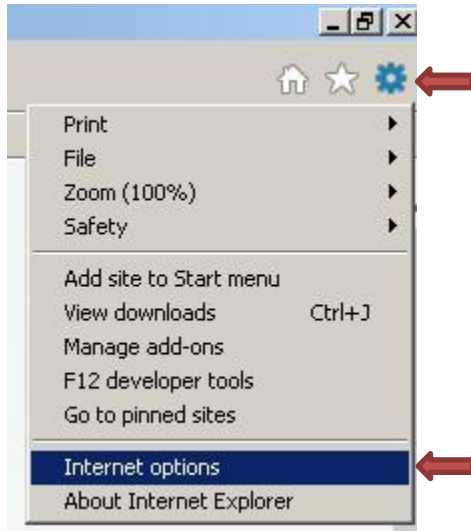
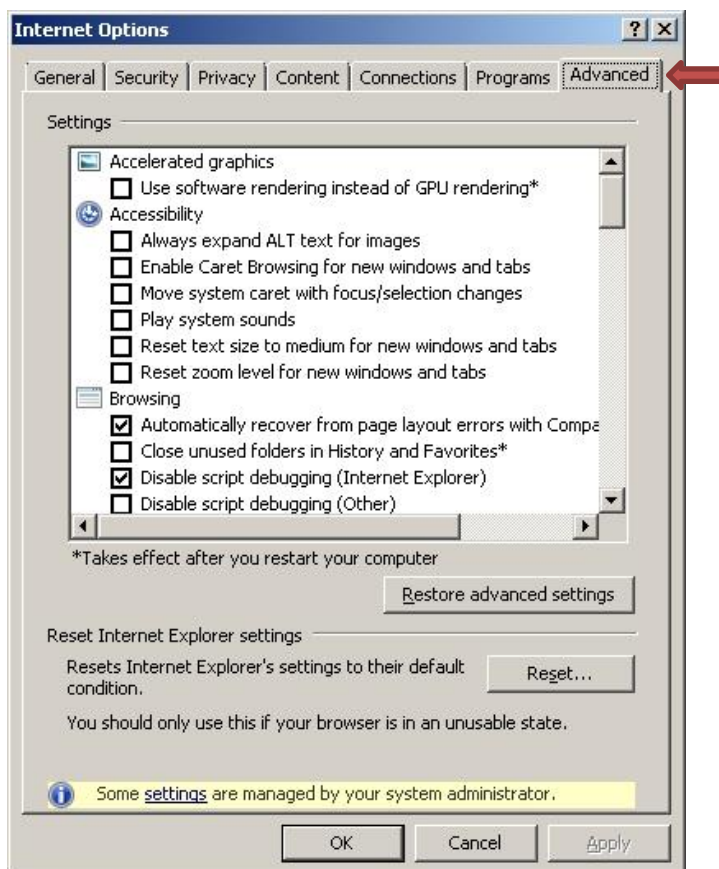


Enabling TLS 1.2 in Internet Explorer

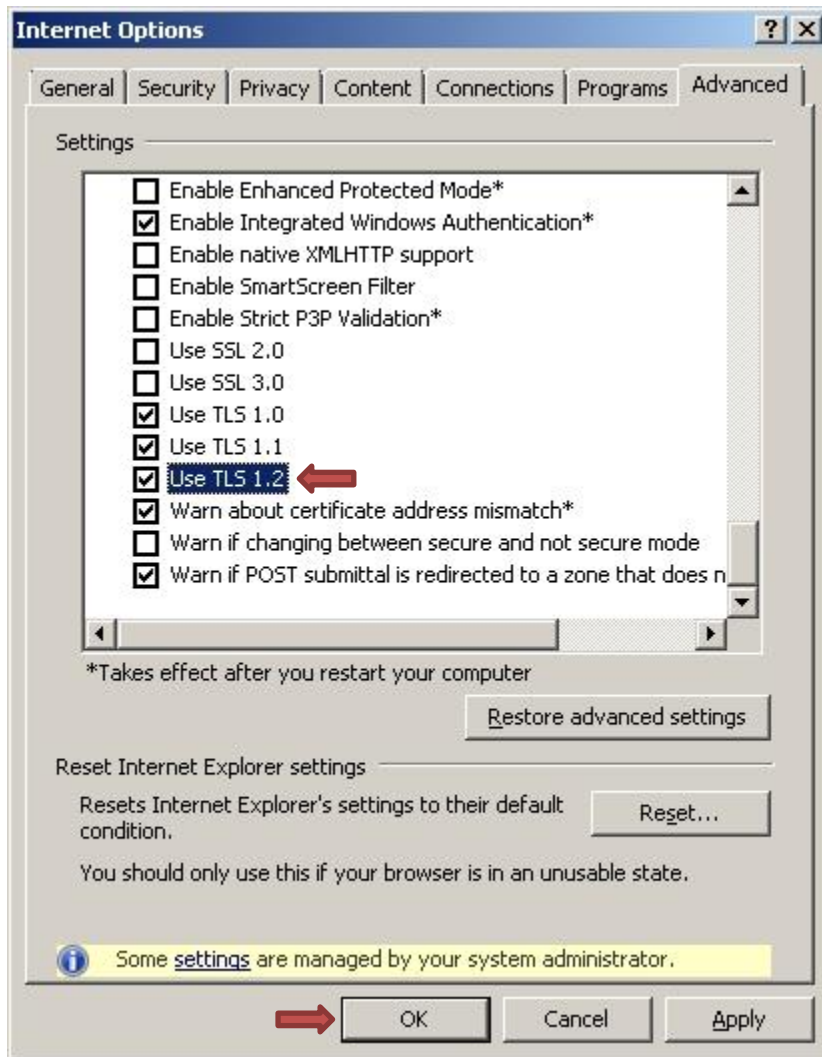
Open an Internet Explorer window, click the **gear icon** at the top right of the Internet Explorer window, and choose **Internet Options**



On the Internet Options window, click the **Advanced** tab



Scroll to the bottom and put a checkmark in the box next to **Use TLS 1.2**



Click **OK**

It is advisable to close and restart Internet Explorer to refresh with the new settings.